

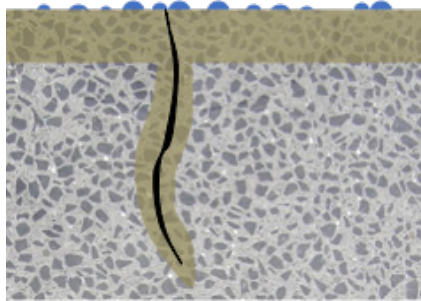
PORESHIELD™ (SME-PS) IS A LONG-TERM CONCRETE DURABILITY ENHANCER

PoreShield is a new technology based on soy methyl ester-polystyrene (SME-PS). It is a cost effective, high performance, non-hazardous, concrete durability enhancer for all densities of concrete, new or old.

- Can be applied topically in place of common penetrating sealers. However, it performs very differently. It is a long-term (10+ years) durability enhancer protecting concrete from premature damage that begins on the inside, caused by moisture, salt, deicing and freeze/thaw conditions. SME-PS fills pores and creates a flexible, continual self-sealing, hydrophobic barrier that is both preventative and curative.
 - Defends concrete from moisture ingress
 - Blocks ion transfer into concrete: Ca, Cl, Mg, etc.
 - Prevents Calcium oxychloride formation
 - Arrests ASR (Alkali-Silica Reaction) deterioration
 - Inhibits staining and rebar corrosion

PORESHIELD (SME-PS) PROVIDES CONTINUOUS LONG-TERM CONCRETE PROTECTION

10+ Years Continuous Protection



SME-PS is absorbed into the pores to block fluid penetration from the inside. It is self-sealing remaining fluid, filling and protecting additional cracks as they form.

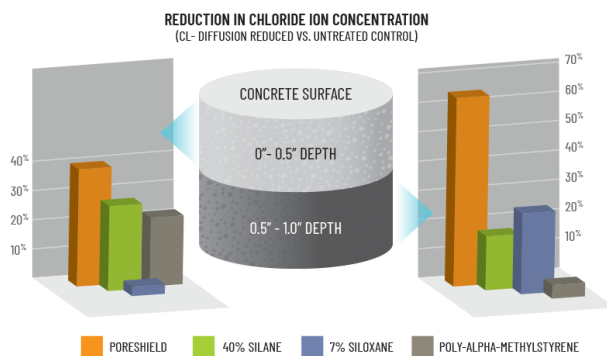
Intact after 300 freeze/thaw cycles



ASTM 666

PORESHIELD (SME-PS) PREVENTS WATER ABSORPTION & INHIBITS ION DIFFUSION

WisDOT Study



Prevents CaOxy formation & ASR damage



SME-PS inhibits fluid absorption and diffusion of ions like chloride and calcium.

NON-TOXIC & SUSTAINABLE

- Low VOC (43.3 g/L): meets national standards for EPA VOC, as well as CARB, SCAQMD, OTC, & AIM
- Environmentally safe: land, air & water
- Safe for workers: does not require PPE
- Renewable, biobased and biodegradable
- USDA BioPreferred & federal purchasing certified

EASY TO USE

- Easy and fast application: horizontal and vertical surfaces using sprayer
- Easy clean-up: soap & water
- Can apply in low temps (to 20° F)
- Works on all densities concrete
- Quick and simple surface preparation
- Cost-effective